
KŌYŌ CHRONICLES

VOL. 1, NO.2



KOYOSTUDIO.COM



MAY 2026

MIDORI SEASON


THE GREEN MONTH AT KŌYŌ STUDIO: READ ALL ABOUT IT

In many countries, including Japan, the month of May is associated with lush greenery and colourful blossoming gardens, since it is indeed the month when nature finally comes back to life. “Midori” in Japanese not only means “green” but also represents the revival of life, symbolises a new, fresh beginning.


In this issue, discover all the current offers at KŌYŌ studio, learn about the color green in Japanese culture as well as significant May celebrations in Japan.



As to our beloved green tea, this month KŌYŌ tea room invites you to taste the unique and refreshing Kukicha tea made from the stems of green tea leaves.

 Teapot 250 ml - 5 euro

 Tea ceremony - 60 euro (1h) +1 more tea

 Kukicha green tea 50g - 18 euro

ANNOUNCEMENT BOARD

Midori coupon

KŌYŌ  Ō
紅葉

KŌYŌ J-SPA
BIJIN
ONSENSOU
MENARD

15€
from 65€

www.menard-latvia.eu
MD7648
1.05.2026 - 31.05.2026



MORE OFFERS

8.05.2026 12:00

1h, Free

Herb Mask
presentation

09.05.2026 16:00

1h, 25 euro

Group tea ceremony -
Kukicha and Gyokuro
Hikari (max. 6 people)

16.05.2026 16:00
22.05.2026 18:00

2h, 35 euro

Kumihimo Midori
workshop

*Make yourself a green
bracelet for financial
growth! :)*

**!!! DO NOT FORGET TO
MAKE A RESERVATION**

“GREENERY” AT KŌYŌ STUDIO

KUKICHA GREEN TEA MADE BY MASTER OSADA - SAN

Teapot - **5 EUR**; Tea 50g - **18 EUR**

Japanese tea farmers believe that tea stems, which remain after the leaves of gyokuro or sencha teas are gathered, do not deserve to be thrown away and all parts of the leaf can be used. Kukicha tea has a rich, sweet and refreshing taste with hints of almonds.



BIJIN MATCHA CLEANSING POWDER AND FACE MASK

25 EUR

Cleansing powder and face mask with matcha and azuki tea. 2 in 1 gentle treatment for normal to dry skin. 100% vegan.

HERB MASK

120g - **90 EUR**; 20g - **25 EUR**

A luxurious herbal facial mask that purifies, refreshes, and revitalizes the skin. Green herb granules and jojoba oil spheres gently cleanse and exfoliate while the pink herb granules paired with chamomile and melissa extracts add moisture and soothe the skin.

ONSENSOU GOLDEN SILK

Shampoo / Hair mask - **68 EUR**

Repairing shampoo and hair mask for damaged/bleached hair. Contain silk protein and hydrolysed collagen that increase keratin production, help retain moisture and enhance hair strength.

SPA HEALING EXPERIENCE “MIDORI NO TACCHI”

- Embellir line
- Herb Mask
- Foot bath
- Japanese Kukicha tea
- Gift - Herb Mask sample

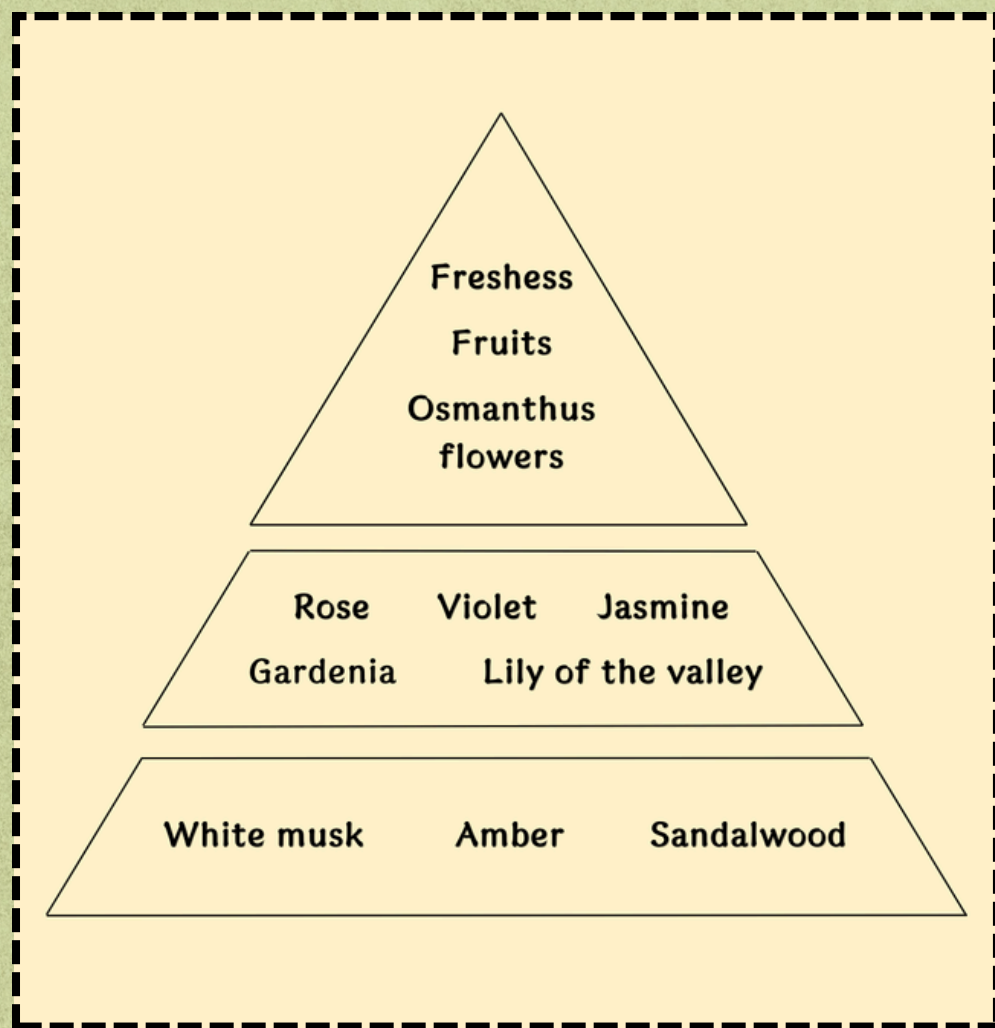
75 min
80 euro



“L'EAU DE RYOKUEI,, PERFUME 50ML



A FRAGRANCE that embodies Japanese aesthetics, created by Japanese style artist Toshio Tabuchi. Notes of fresh greenery and an exquisite floral bouquet awaken, soothe and embrace, allowing you to become one with nature.



80€
50€

HISTORY

One peaceful day, Daisuke Nonogawa, the founder of Menard, was sitting in a park when he noticed a maple leaf gracefully falling onto the perfectly still wa-

“春風の 吹いて居るなり 飴細工“

“The spring breeze
Is blowing.
Amezaiku”

-KAWAHIGASHI HEKIGOTO

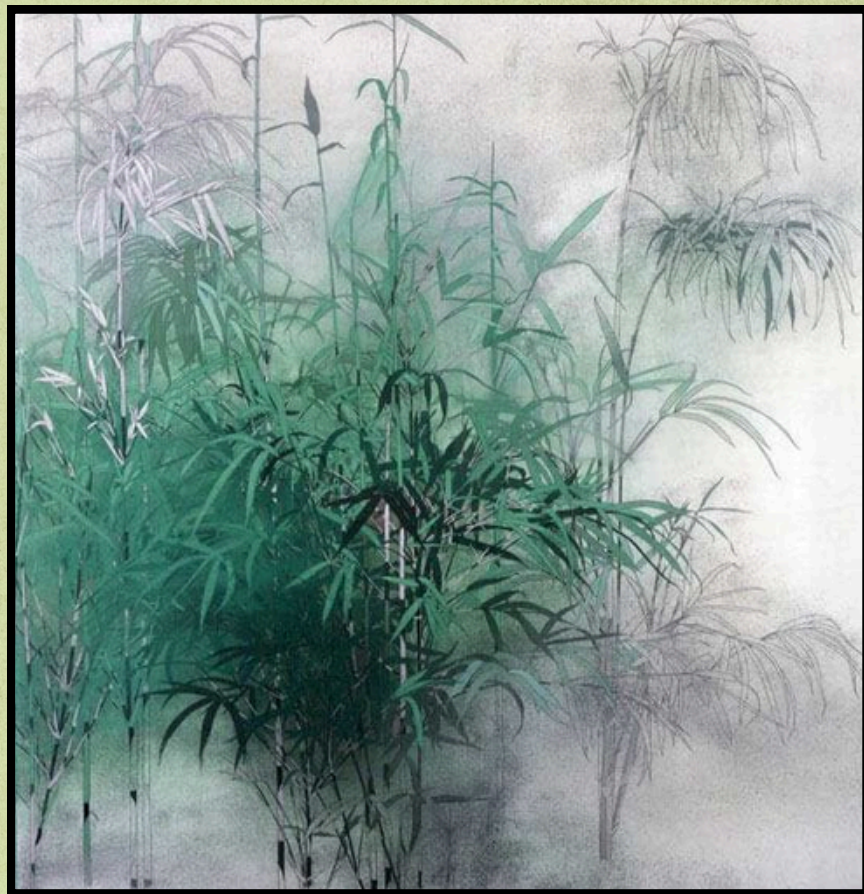
-ter. In that moment, Nonogawa got the inspiration to make a perfume that feels and looks exactly like the art of nature he had just witnessed. The bottle, made by **Toshio Tabuchi** (read more below), resembles a maple leaf calmly landed on the surface of water. Meanwhile, the scent is light and fresh, bringing peace and quiet to your mind.

*amezaiku: A candy fashioned in human and animal forms

GREEN IN JAPANESE CULTURE

As mentioned before, “midori” in Japanese has a literal and figurative meaning. However, an additional interesting fact is that “midori” refers to the deep green color of plant leaves and is used as a general term for green colours. Therefore, it is no surprise that green or “midori” is immediately associated with nature, growth, fertility, and youth. As a matter of fact, in Japanese language there are words and phrases that do not simply use “midori” to refer to a color, but rather give it a different, figurative meaning. For example, infants are referred to as “midoriko,” while wet and glossy hair is described as “midori no kurokami.” Nevertheless, there is one peculiar term in Japanese that sometimes causes con-

-fusion amongst the learners of the language. The term is “ao” which basically means a fusion between blue and green. This word exists due to the fact that, in the past, the only way of producing a green color was by mixing blue and yellow, since there were no natural dyes that could produce the color green. Essentially, despite the fact that nowadays Japanese uses “midori” as a general term for all green things, “ao” is still used to describe specific items such as green traffic lights or vegetables. Not to mention that, sometimes, phrases like “blue mountains” and “blue fields” refer to green rather than the actual color blue, meaning the plants that turn green in spring.



A painting of bamboo by Toshio Tabuchi

TOSHIO TABUCHI (1941-now)

Toshio Tabuchi is a contemporary Japanese painter whose works are known for their tranquility and bold colours. Tabuchi uses the traditional Japanese painting technique called Nihonga (日本画) that is characterised by the use of natural pigments (e.g., malachite, lapis lazuli), and occasionally ink, together with animal glue on paper or silk. The term was coined to differentiate it from its counterpart, known as Yōga (洋画) or Western-style painting. Through his work, Tabuchi expresses his love for the tranquil Japanese nature and longing to preserve it, as he once said: “When I was a child, Japan had clean air, pure flowing water, and a sky full of stars. [...] Perhaps the beautiful land I depict embodies my wish to restore the nature of those times.”

WHAT IS A JAPANESE GARDEN?

The major distinction that separates a Japanese garden from a regular garden is that the former is mostly focused on creating a miniature reproduction of nature. It recreates a scenery – mountains, islands, rivers, etc. Additionally, this craft is deeply rooted in the philosophy and history of Japan. The influences from Shinto, Buddhist, and Taoist philosophies are blended together in a Japanese garden to represent respect for nature, quiet reflection, harmony, natural balance and flow. That is why these gardens feel calm and “effortless”, even though they are very carefully designed.

That being said, making an aesthetically pleasing Japanese garden is not as easy as it sounds. There are so many regulations and specifics to take into account that this craft is actually college-taught. In order to create an “effortless” yet picturesque and harmonious scenery, one must think of various design principles. Rocks and plants must be arranged in a certain way. For example, there is a distribution of sizes – 3 stones in a group are never the same size. The view is controlled as well. In order to create a sense of depth or more space, the scenery is “borrowed” from outside the garden. This technique, is called Shakkei, literally meaning “borrowed scenery” (see [Image 1](#)). By doing this, the garden appears

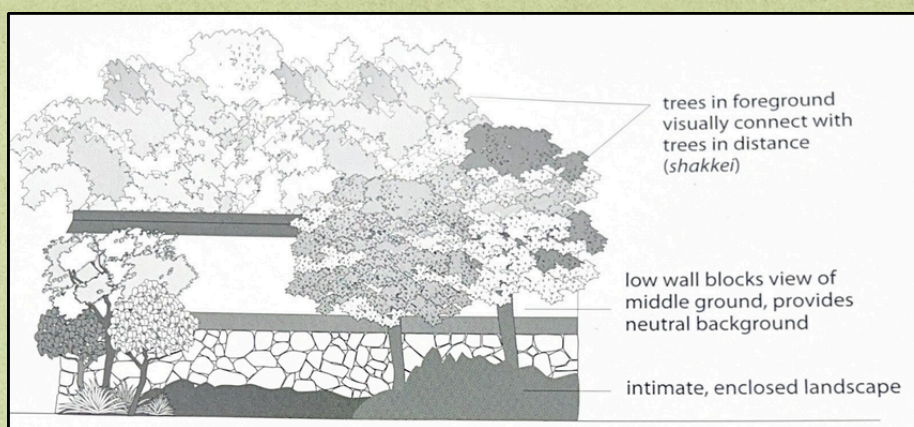


Image 1. From: “*Inside Your Japanese Garden: A Guide to Creating a Unique Japanese Garden for Your Home*” by J. Cali and S. Yasumoro



Baltic Bonsai park. Photo by “Baltic Bonsai Park” on Facebook.

to expand beyond its actual boundaries. Some other techniques include Miekakure and Meisho. Miekakure (“hide-and-reveal”) is the concept of partially concealing an object to enhance the depth of a shallow space. For instance, paths that twist and turn, preventing a direct view of the entire landscape and forcing a slow and deliberate walk, or waterfalls, hidden in spring by thick green leaves but revealed in winter, forcing visitors to rely on sound in the spring and sight in the winter. Meanwhile, Meisho (reference to a real place) is a miniaturised, celebrated landscape (such as a famous lake, mountain, or scenic coast) that evokes pleasant associations.

JAPANESE GARDENS TO SEE

BALTIC BONSAI PARK

A Japanese-style garden, situated in the Inčukalns Parish, Sigulda Municipality, that embodies peace and invites you to slow down the daily rush.

JAPANESE GARDEN OF DARBĖNAI

This garden, located in the Kretinga District, Lithuania, is the largest Japanese garden in Europe, covering an area of 16 hectares. Furthermore, it was designed by Japanese master Hajime Watanabe.

GOLDEN WEEK



Photo by: Unknown.

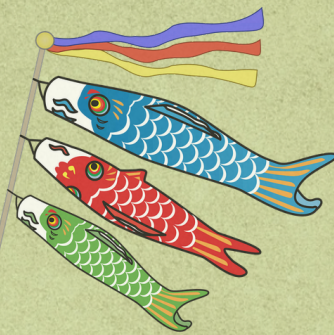
GOLDEN WEEK is a long spring holiday period in Japan, spanning from *April 29th to May 5th*. In Japanese, it is referred to as *Ōgon Shūkan (黄金週間)* and it is a collection of 4 national holidays. This significant occasion is characterised by symbols of spring, nature, strength and children's growth.

● SHOWA DAY (SHOWA NO HI)

Celebrated on April 29th, it is a public holiday in Japan that honours the birthday of Emperor Shōwa, the reigning emperor from 1926 to 1989. The purpose of the holiday is to encourage public reflection on the turbulent 62 years of the emperor's reign.

● CONSTITUTION DAY (KENPŌ KINENBI)

This public holiday takes place on May 3. On this day in 1947, the new postwar constitution was put into effect. Constitution Memorial Day is a time to reminisce about the events of Japan's history.



● GREENERY DAY (MIDORI NO HI)

On May 4, a holiday, dedicated to nature, is celebrated all across Japan. As its name suggests, it is a day to commune with nature and to be thankful for blessings. Until 2006, Greenery Day used to be celebrated on April 29, the birthday of former Emperor Showa. The day is dedicated to the environment, because the emperor loved plants and nature.

● CHILDREN'S DAY (KODOMO NO HI)

The final celebration in Golden Week that takes place on May 5 and is a day set aside to respect children's personalities and to celebrate their happiness. Children, like the greenery and flowers of spring, are still very young and are just beginning to blossom and grow stronger. Families pray for the health and future success of their sons by hanging up koinobori or 'carp streamers' – carp-shaped windsocks that flutter in the wind.

- Trains, airports and sightseeing spots get very crowded during Golden Week, and accommodation in tourist areas can get booked out well in advance.

KŌYŌ JAPANESE STUDIO

Pulkveža Brieža iela 9 k-1

t. +371 26269067

t. +371 29374604



WWW.KOYOSTUDIO.COM



@KOYO_JAPANESE_STUDIO

Brought to you with love by Jekaterina, Nadja and Kristīne
